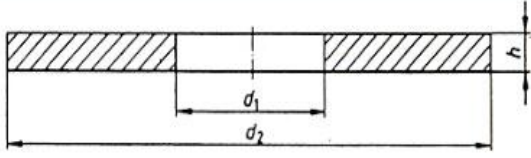
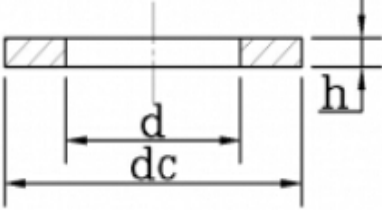
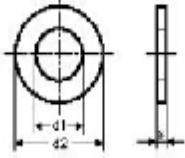
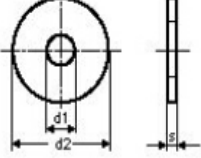
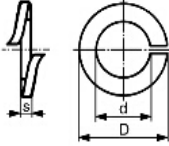
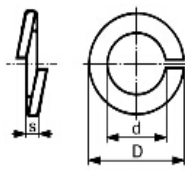
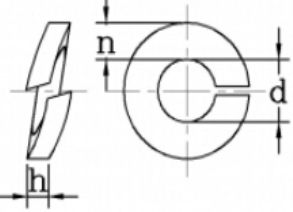
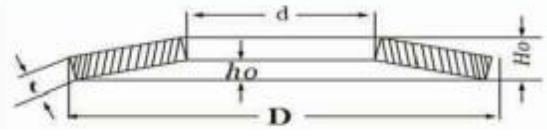
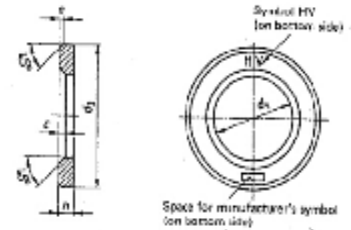


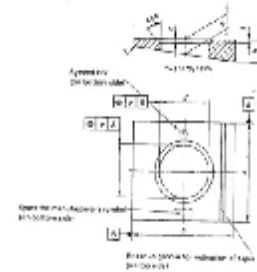
## washer

<p>Flat washer DIN125</p>	
<p>Flat washer DIN126</p>	
<p>Flat washer DIN433</p>	
<p>Flat washer DIN9021 (ISO 7093)</p>	
<p>Spring washer DIN127 A with tang ends</p>	
<p>spring washer DIN127 B with smooth ends</p>	
<p>spring washer DIN7980</p>	
<p>wing spring washer DIN2093</p>	

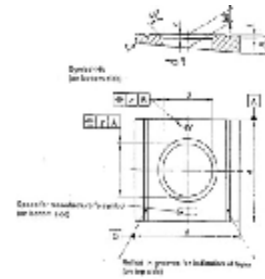
high-structural washer DIN6916



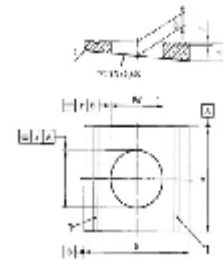
square taper washer DIN6917



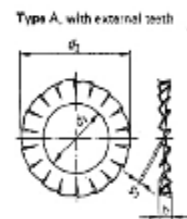
square taper washer DIN6918



square taper washer DIN434



serrated lock washer DIN6798A with external teeth



serrated lock washer DIN6798J with internal teeth

